

2024 Masterplan Vision diagram
(Image Credit: ORG Permanent Modernity)

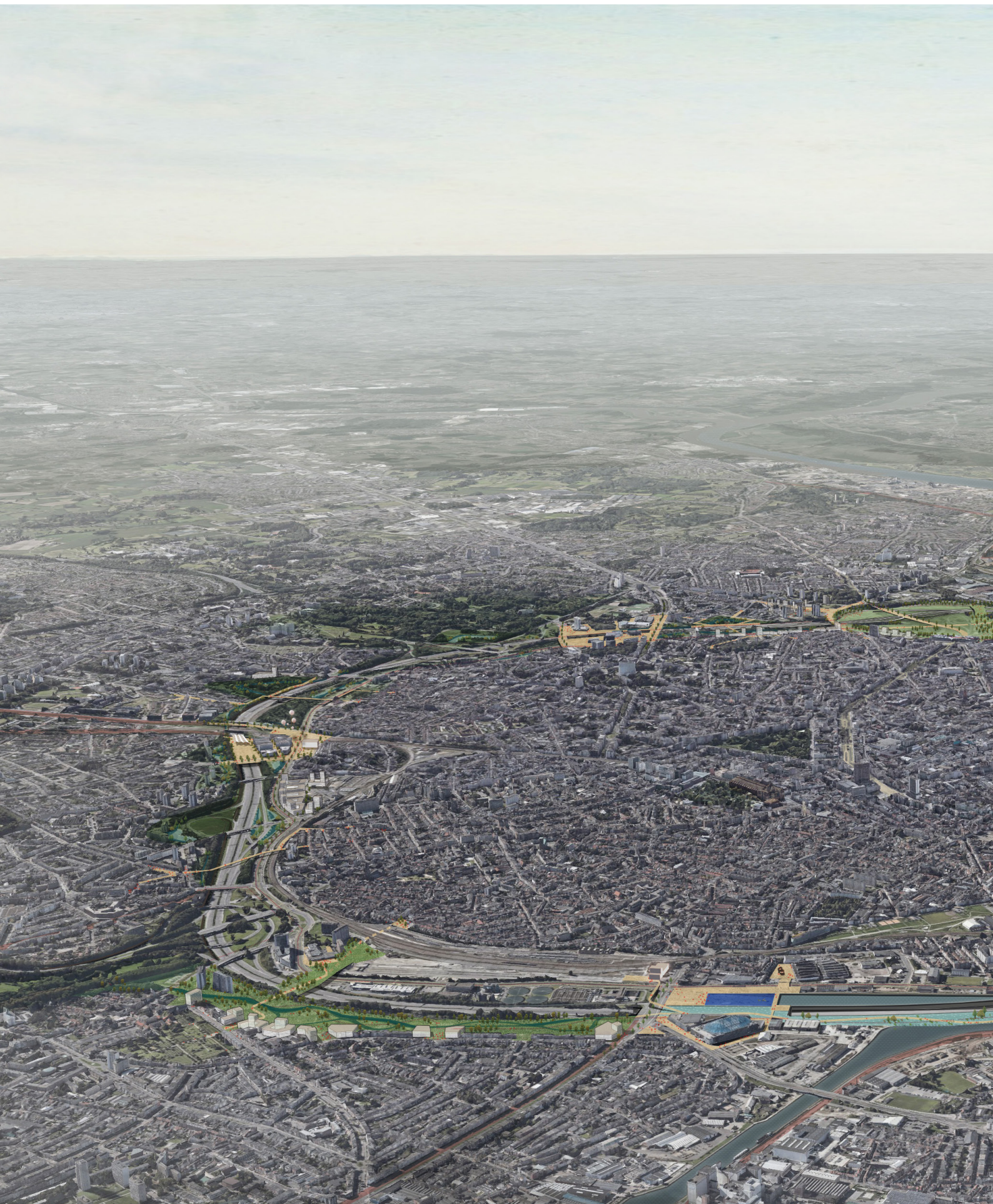
Capping the Antwerp Ring Highway, Antwerp, Belgium

2016 - under construction. The co-creation process for Capping the Antwerp Ring created a grand consensus and unlocked 2 billion in dedicated funding for the project. Afterwards an international competition brought multi-disciplinary teams to further study the constituent parts of the ring capping project. The project has created a city-wide transformation within a coherent framework, namely through the enhancement and design of significant multi-modal transit hubs that connect hitherto fragmented districts, i.e., landscape parks, cultural sites, and affordable housing and mixed-use development.

Currently, the first phase is under construction. ORG executed the initial study, curated the competition, and remains lead manager of the overall projects to ensure all the pieces come together successfully.

Urban Designer, including narrative translation of consensus vision (2016), and visualizations of the overall ambitions for the 2020 masterplan and implementation update.

ORG Permanent Modernity



2020 aerial view of Capping the Antwerp Ring

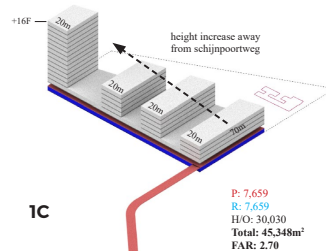
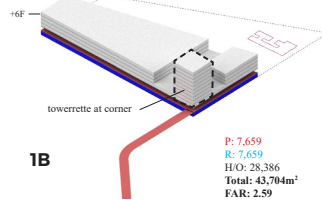
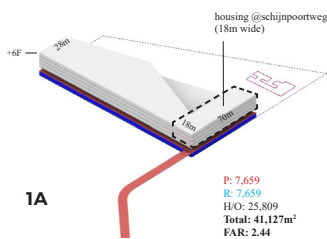




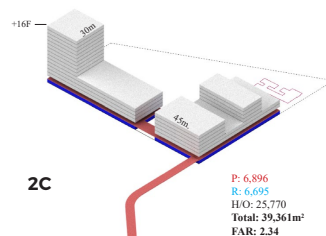
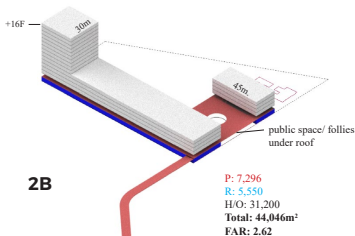
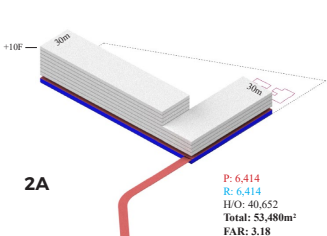
Aerial view of existing South Park (2020)



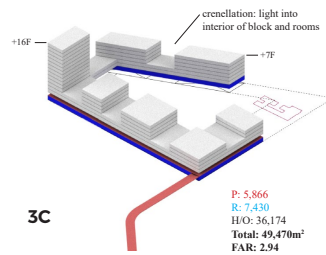
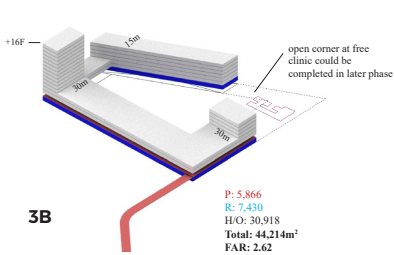
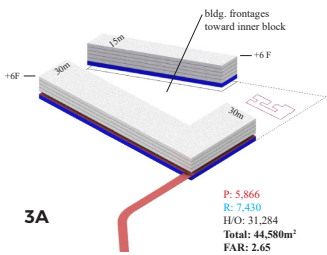
South Park redevelopment aerial view (2020)



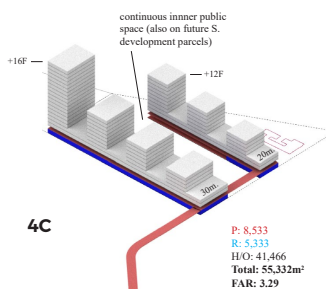
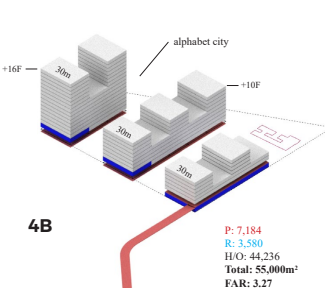
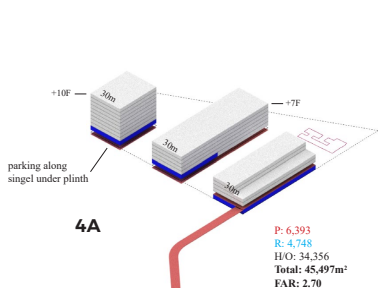
1. N / S BLOCK



2. L - BLOCK



3. PERIMETER
BLOCK



4. E / W - BLOCK

